

Worlds of Connections

PI: Julia McQuillan
Co-Is: Christine Cutucache,
Patricia Wonch Hill,
Bilal Khan

Is NETWORK SCIENCE relevant
to your SEPA goals? Probably!

Does your project involve:

- » Dissemination
- » Relationship Building
- » STEM identities
- » Interconnections
- » Complex Systems
- » Next Generation Science Standards

Cross-Cutting Concept 4
(Systems and System Models)

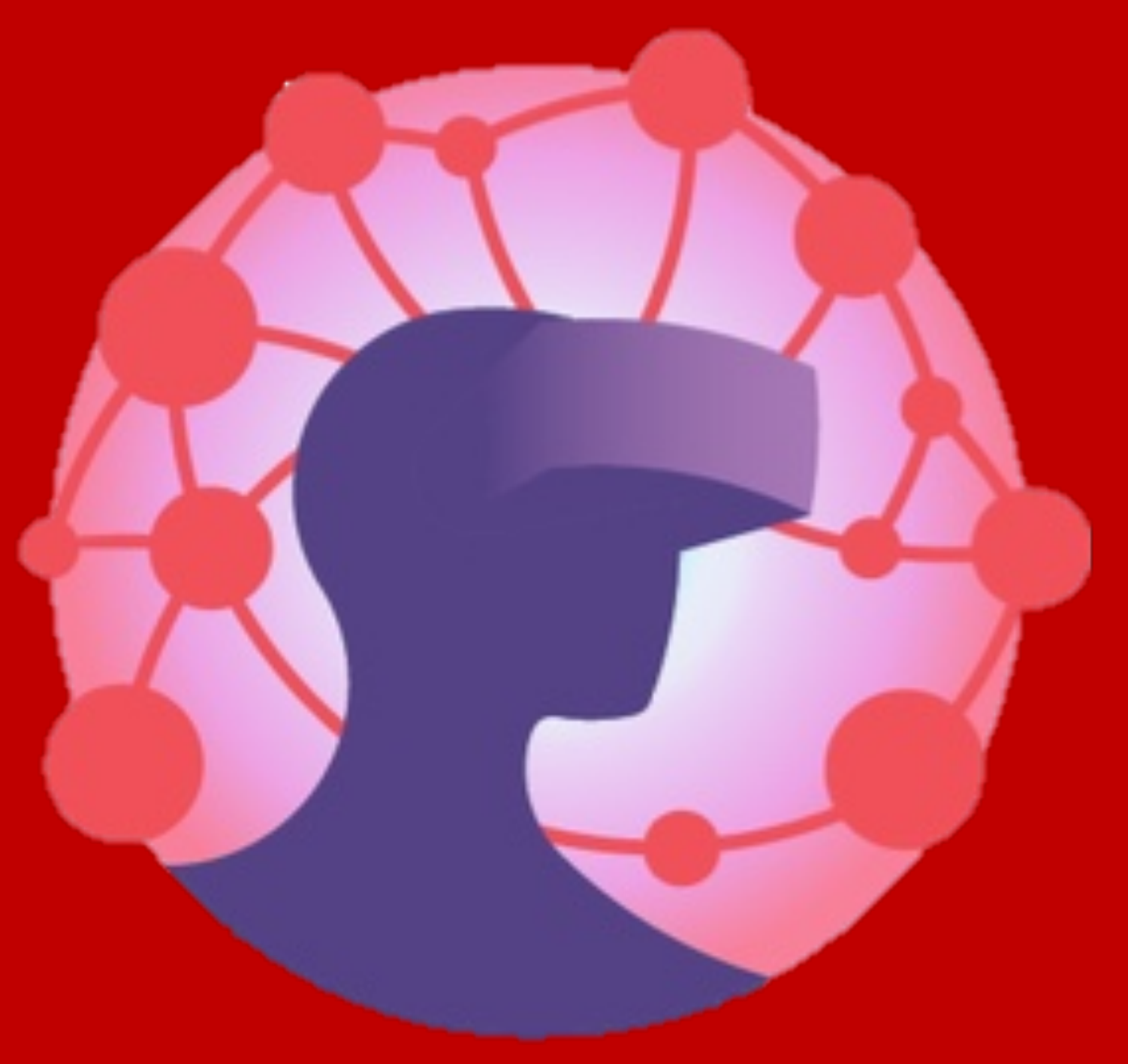
If yes – you might want to partner
with us!



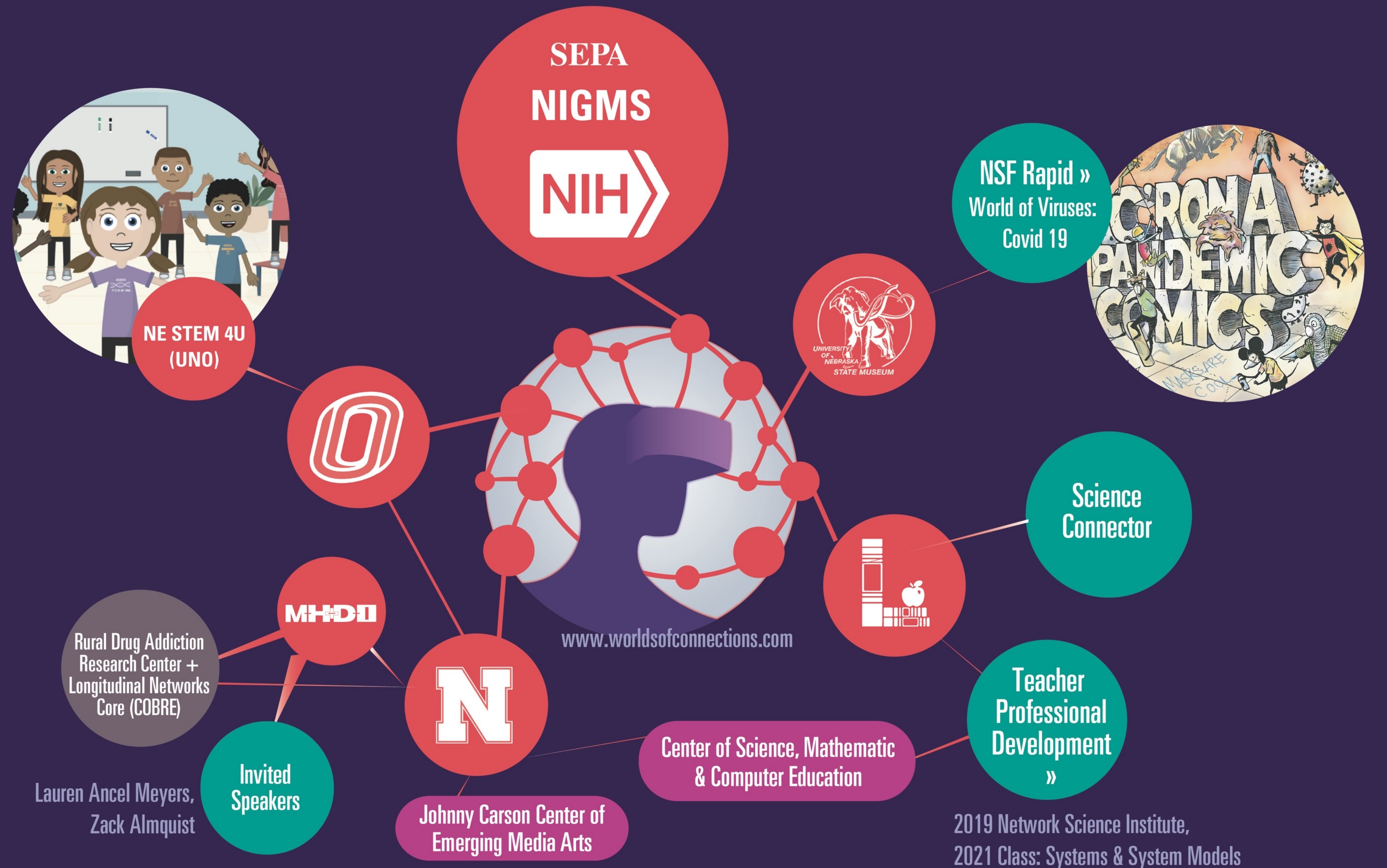
Visit our website:
www.worldsofconnections.com



This project was supported by the National Institute of General Medical Sciences, the National Institutes of Health under Award Number 5R25GM129836-02. The content is solely the responsibility of the authors and does not necessarily represent the official views of the National Institutes of Health.



Worlds of Connections SEPA: Delivering network science concepts through partnerships



JULIA MCQUILLAN, PI, UNIVERSITY OF NEBRASKA–LINCOLN; Christine Cutucache, University of Nebraska–Omaha; Judy Diamond; Megan Elliott; Patricia Wonch Hill; Bilal Khan; Meghan Leadabrand; Michelle Phillips, Inverness Research Inc.; Amy Spiegel; Nikolaus Stevenson, University of Nebraska–Omaha; Ash Eliza Smith; Wendy Smith; Colleen Syron, Syron Design